



JASSCAN INDONESIA

NDT INSPECTION & HEAT TREATMENT



Kawasan Bintang Industri II Lot E No. 726
Jl. Brigjen Katamso - Tanjung Uncang
Batam 29432 INDONESIA
Tel : +62 778 736 8283 | Fax. : +62 778 736 8285
website : www.jasscanindo.com

Jasscan Indonesia was built in Batam Island in year 2013, experienced and supported from the main company **Jasscan Inspection Pte Ltd** that was formed and established in year 2001 in Singapore.



VISION

Jasscan is renowned one-stop Oil/Gas and Marine Inspection and Heat Treatment Services provider whose vision to be forerunner and significant global player in the area of marine and oil/gas industry inspection and heat treatment services.

MISSION

Jasscan to continually provide quality and excellence in every service rendered to each client satisfaction

KEY POINT OF CONSIDERATION

- **GROUP CAPABILITY**

Jasscan have global footprint with the necessary resources, financial capacity, knowledge base and experience to support you in your endeavours

- **TECHNOLOGY BASE/SUPPORT**

We offer an unparalleled window in to the emerging technologies given our global presence in the inspection business as well as the experience

- **COSTUMER FOCUS**

Our business philosophy is to work with the customer, ascertain his need and struscture the service to ensure efficient delivery. We believe in co-operation and mutually aligned objectives to negate an adversarial relationship so typical of similar contract.

- **COSTS**

The cost of NOT and Heat Treatment relative to the overall project value is very marginal, however the cost of a failed NOT service due to engaging low cost service providers is substantially disproportionate to the savings at the outset. Our professional will enhance your productivity and contribute the overall success.



- **QUALITY**

Jasscan is ISO 17020 KAN {LI-061-IDN}, MIGAS, APITINDO certified, it is a significant figure in the industry and has consistently provided a high standard of service to a myriad of established around the globe. Jasscan is fully certified by various marine organizations over the years an continually strives for futher improvement.

SERVICE RANGE

For a couple years since 2013 the name of our company Jasscan Indonesia has been synonymous with the provision of quality related Inspection Services.

CONVENTIONAL AND ADVANCE NDT AND INSPECTION SERVICES

JASSCAN Indonesia provide highly skilled, experienced and motivated personnel qualified and certified in accordance with international certification schemes {e.g. PCN (EN473/ISO9712), ANSI CP-189 and SNT-TC IA} in the Conventional techniques that have underpinned the NOT industry from its earliest days.

Services As Following, Non Destructive Testing Services

- X-Ray & Gamma Radiography
- Pipe Line Crawler X-Ray
- Ultrasonic Testing
- Magnetic Particle Testing
- Liquid Penetrant Testing

Other Services

- Heat Treatment
- NOT Consultancy



NON DESTRUCTIVE TESTING SERVICES

Gamma Radiography

Radiography involves the use of penetrating Gamma to examine parts for internal imperfections. A Radioactive isotope is used as the source of radiation. Radiation is directed through a test area and into a film, through which an imperfection is indicated by a change in density on the film. This results in the clear detection of imperfections as they are more visible as compared to the results of Ultrasonic Flaw Detection.

Technique capability:

- All type of materials can be inspected.
- Produces the permanent evidence (radiograph film).
- Length of the defect can be sized.

PIPELINE CRAWLER

Jasscan Indonesia offers a comprehensive range of inspection services for both on and offshore pipe laying activities. Operating from strategically located operational and services centres around the world, covering Asia Pacific, Middle East, Africa, Europa and Americas, the company is at the forefront of pipeline NDT Technology with a proven track record of delivering inspection requirements within demanding construction cycles.



T-In Pipe Line X-ray Set up



Radiation safety boundary on the RT Activity

Model	3" Gamma Crawler	5" Gamma Crawler	5" X-Ray Crawler	5" X-Ray Crawler	5" X-Ray Crawler	5" X-Ray Crawler	5" X-Ray Crawler	12-14" JC-Ray Crawler	12-14" JC-Ray Crawler	12-14" JC-Ray Crawler
Typical Pipe Size	3-6	6-12	6-8	8-12	10-12	12-16	12-18	16-24	24-36	36-72
Overall Length	25	25	21	28	28	28	1.3	21	21	21
IIIa	0.3	0.3	0.3	0.3	0.5	0.5	0.5	0.5	0.8	0.8
Bolt/Ty C-2/Milly	20v 3.6ah	28v 3ah	48v 7ah	48v 10ah	120v 10ah	120v 10ah	120v 10ah	120v 10ah	120v 25ah	120v 80ah
Min Pipe Int.Ola	73	120	146	155	229	248	270	400	500	800
Typical C	90x20 sec	90x20 sec	60x20 sec	100x20 sec	70x30 sec	70x30 sec	120x20 sec	70x30 sec	70x30 sec	70x120 sec
Max f' 21 C	75	25	25	25	30	30	30	30	30	30

Crawler Table Specification



Crawler & X-Ray Tube



RT Crawler Activity

NON DESTRUCTIVE TESTING SERVICES

ULTRASONIC TESTING

The thickness measurement & internal flaws of a material can be examined by using Ultrasonic Testing. It first transmits sound waves at a high frequency into material. The sound introduced into the test object then returns to a receiver when reflects off an internal imperfection or from the backwall surface. The Imperfection or from the backwall surface. The imperfection or thickness is determined by the echo that is returned



UT Inspection

Technique Capability:

- All type of materials can be inspected
- Inspection item can be examined from one side access itself
- Length & Depth of the defect can be sized



UT Inspection

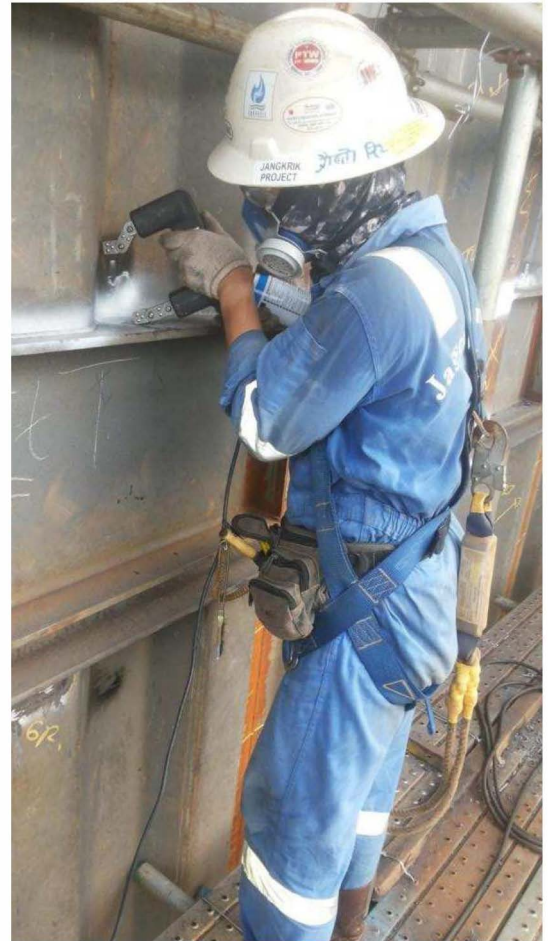
NON DESTRUCTIVE TESTING SERVICES

MAGNETIC PARTICLE TESTING

Magnetic particle Inspection is used to examine surface and near surface defects. Magnetic particle inspection uses magnetic field and small ferrous particles (iron filings) to detect flaws in test object. By inducing a magnetic field in a ferro-magnetic material and then dusting the surface with iron filings, any surface/near surface flaws will be visibly shown by a accumulation of iron filings.

Technique Capability :

- **Only ferromagnetic materials can be inspected**
- **Detects Surface & Near Surface defects**



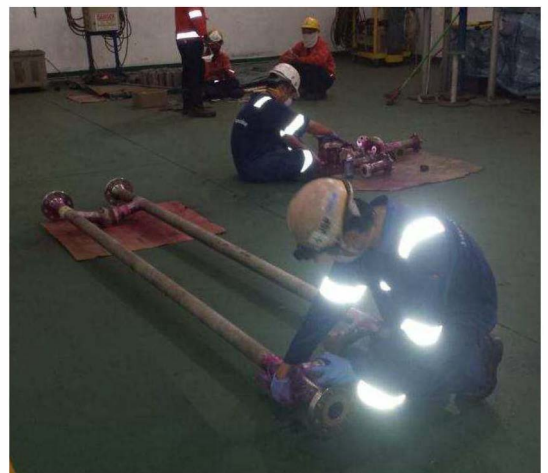
MPI-Inspection

LIQUID PENETRANT TESTING

Liquid penetrant testing is used to check for surface defects of a component. Test object are coated with dye, then the excess dye is removed after penetration time and a developer is applied onto it. The developer act as a blotter. Any imperfections/cracks is seen visibly by the "Bleedout"

Technique Capability :

- **All types of Non Porous materials can be inspected.**
- **Detects open surface defects**



PT- Inspection

ADVANCED NON DESTRUCTIVE TESTING SERVICES

INSPECTION TECHNIQUE COMPARISON

INSPECTION TECHNIQUE COMPARISON									
Method	Pipe	Crew Size	Scan/ Shot time	Set-up time	PRODUCTIVITY Welds per hour	PRODUCTION Interruption	Safety Hazards	Record of Inspection	Auditable Results
RT	2"Sch 40	2 man	2 min	5 minutes per/ weld	6 to 10	100%	100 %	YES	YES
	2"Sch 80	2 man	30 min	5 minutes per/ weld	2	100%	100 %	YES	YES
	24" Standard	2 man	60 min	5 minutes per/ weld	1.5	100%	100%	YES	YES
MANUAL UT	2"Sch 40	1 man	10min	5 minutes per/ weld	NA	0%	0%	NO	NO
	2"Sch 80	1 man	30min	5 minutes per/ weld	2	0%	0%	NO	NO
	24" Standard	1 man	&Omin	5 minutes per/ weld	1.5	0%	0%	NO	NO
PA AUT	2"Sch 40	2 man	30 sec	3 minutes per/ weld	10 to 20	0%	0%	YES	YES
	2"Sch 80	2 man	1min	3 minutes per/ weld	10 to 12	0%	0%	YES	YES
	24" Standard	2 man	3 min	3 minutes per/ weld	10 to 12	0%	0%	YES	YES
1. Amounts are based on averages, results will vary. 2. RT: Assumes required exposure with 20 curie source. 3. Manual UT: Assumes minimum scanning requirements as per ASME. 4. Set up time is based on typical accessibility and work plan. NOTE: Does not include time and cost for film processing, reporting, re-shots, etc.									

PT. JASSCAN INDONESIA

Jasscan Indonesia was elected as a corporate member of MIGAS and its services are fully certified by established government Oil and Gas organization that further reflect the credibility of the company's services in Oil and Gas. And then Jasscan Indonesia have accreditation from KAN (National Accreditation Commission) as Laboratory Inspection its proven that we would be give you a credible, accurate and capability of inspection result.

Stringent prerequisites have to be met in order to receive certification and recognition from organizations. This is a list of organizations which have certified our services over the years



SKT MIGAS
0013 / SKT-02 / DMT / 2014

0299 / 2013

Contact Person :

ARI SUBEKTI

Director

PT. JASSCAN INDONESIA

tel : +62 778 736 8283
fax : +62 778 736 8285
mobile : +62 8199 1066 500
mobile : +62 8127 0491 765
email : ari@jasscan.com